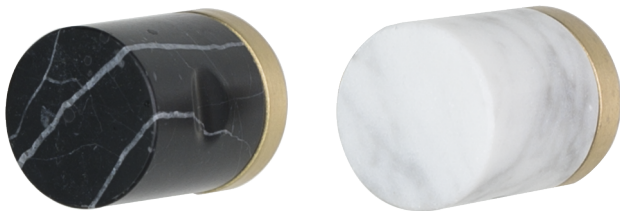


HARDWARE

BLACK MARBLE PULL WHITE MARBLE PULL

OL: 7 1/2" | 6 1/2" | 5 1/2"
OW: 3/4" | P: 1 1/2" | BD: 1/4"
CC: 6" | 5" | 4"

OL	Overall Length
OW	Overall Width
P	Projection
BD	Base Diameter
CC	Center to Center



BLACK MARBLE KNOB WHITE MARBLE KNOB

OD: 1" | P: 1 1/4"