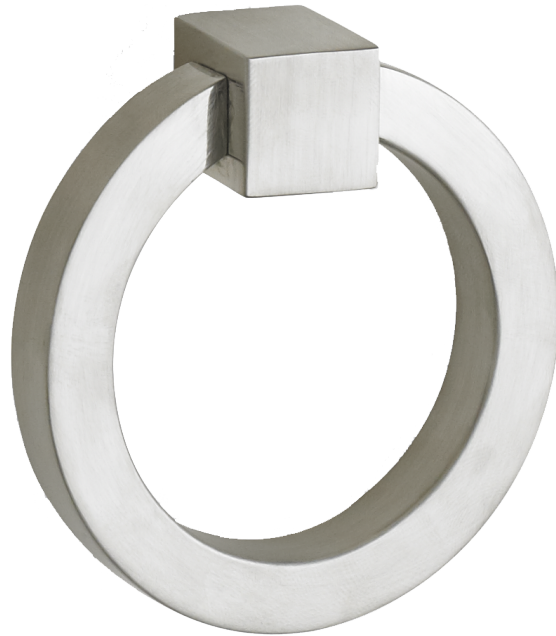


HARDWARE



LARGE HOLDEN DROP PULL

SHOWN IN POLISHED BRASS | BRUSHED NICKEL

OL: 3 1/8" | OW: 3" | P: 3/4" | BS: 3/4"

CARVER PULL

SHOWN IN POLISHED BRASS | BRUSHED NICKEL

OL: 4 1/2" | OW: 1 1/2" | P: 3/4"



OL	Overall Length
OW	Overall Width
P	Projection
BS	Base Square