

# OBD

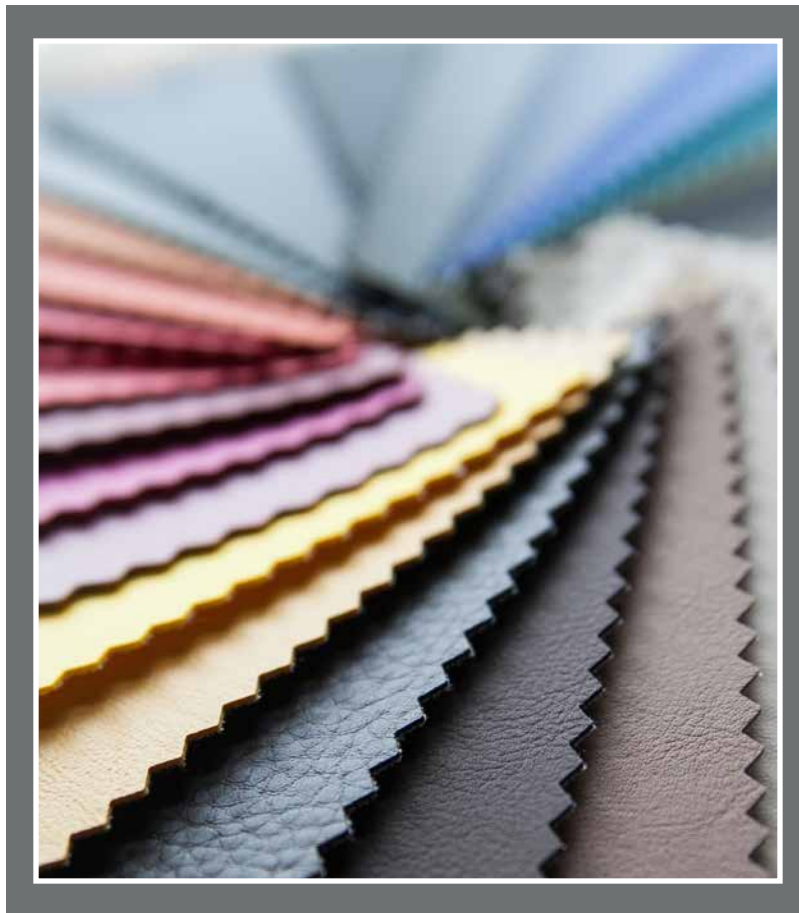
Biscayne Designs

---

## FABRIC & LEATHER

---

SELECTIONS



Easy Care. Fabric. Leather. Sunbrella.

| [WWW.OLDBISCAYNEDESIGNS.COM](http://WWW.OLDBISCAYNEDESIGNS.COM) |

# OLD BISCAYNE DESIGNS

## Recycled Leathers



*Rushmore RAVEN*



*Cantina COCOA*



*Cantina BLACK*



*Oregon Trail SADDLE*



*Oregon Trail JAVA*



*Cantina SADDLE*



*Gunslinger COFFEE*



*Gunslinger SADDLE*

**CLEANABILITY** Cleanable with soap and water; do not use alcohol-based cleaning agents.

# OLD BISCAYNE DESIGNS

## Recycled Leathers

---



*Cantina* **MAGNETITE**



*Cantina* **PEANUT**



*Cantina* **QUARRY**



*Cantina* **TAUPE**



*Cantina* **MOLASSES**



*Cantina* **DOVE**



*Cantina* **PUTTY**

**CLEANABILITY** Cleanable with soap and water; do not use alcohol-based cleaning agents.

# OLD BISCAYNE DESIGNS

## Padded Leathers



*Palance SILT*



*Palance SABLE*



*Palance GRANITE*



*Palance SAND*



*Palance TOBACCO*



*Palance STEEL*



*Palance RUSSETT*

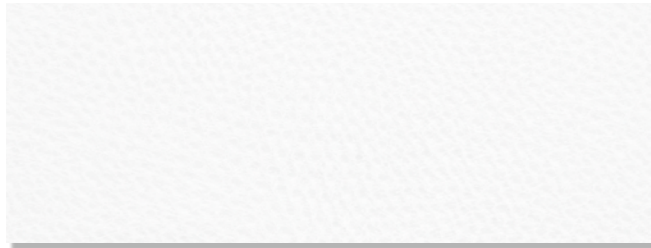


*Palance PUEBLO*

CLEANABILITY Water-based cleaners may be used.

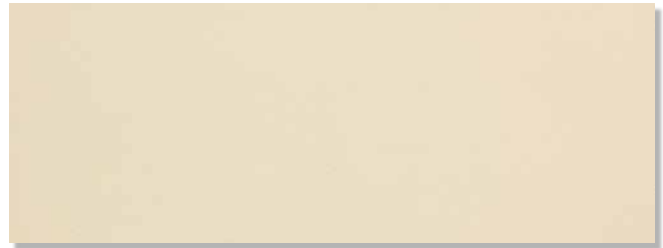
# OLD BISCAYNE DESIGNS

Easy Maintenance



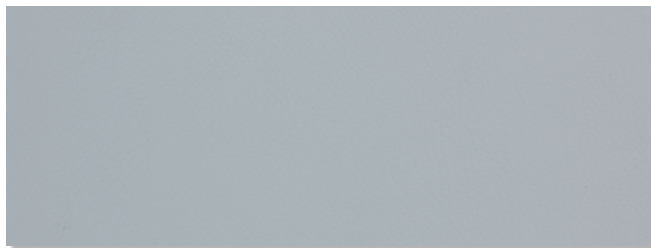
DILLON SNOW

WS | BC



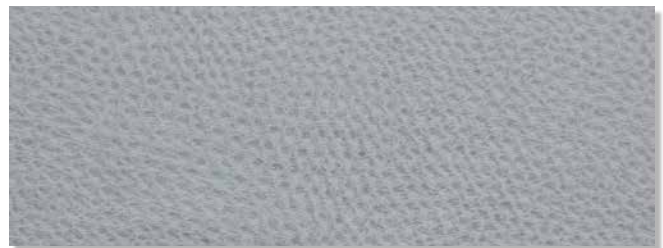
YOSEMITE PARCHMENT

WS | BC



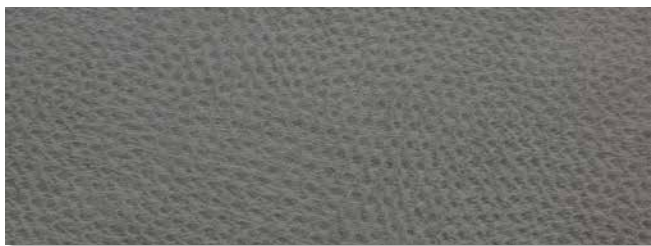
DILLON STEEL

WS | BC



SUAVE LEAD

WS



SUAVE ORE

WS



RUSHMORE GREY

WS | BC



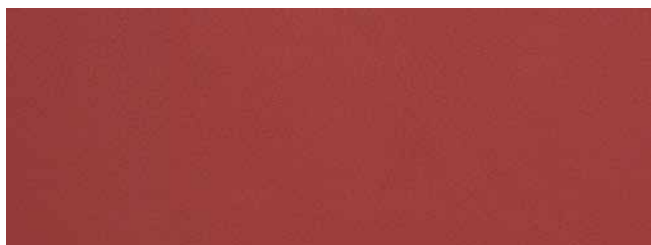
RUSHMORE SADDLE

WS | BC



YOSEMITE EARTH

WS | BC



DILLON LIPSTICK

WS | BC



DILLON THUNDER

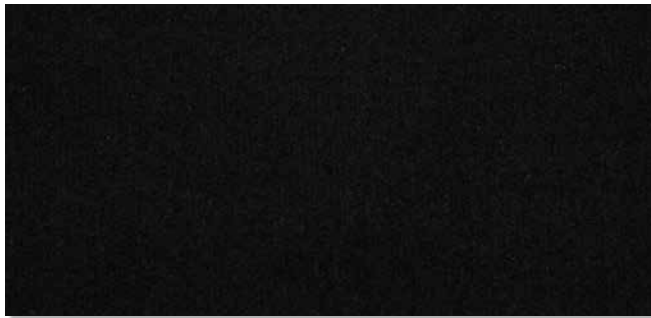
WS | BC

**CLEANABILITY** **ws** - Both water and solvent based solutions. **bc** - Bleach cleanable - 5:1 water/bleach solution.

# OLD BISCAYNE DESIGNS

## Performance Fabrics

---



*Dorset* **BLACK**



*Archetype* **SMOKE**



*Venue* **COCOA**



*Archetype* **CAFE**



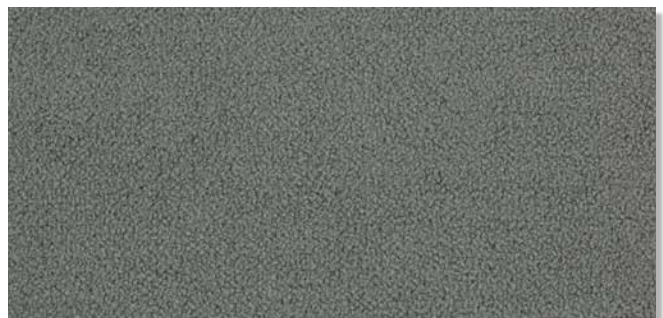
*High Cotton* **PEACOCK**



*Venue* **GRANITE**



*Dorset* **CHARCOAL**



*High Cotton* **STEEL**

**CLEANABILITY** Water-based cleaners may be used.

# OLD BISCAYNE DESIGNS

## Performance Fabrics

---



*Venue HEMP*



*High Cotton KHAKI*



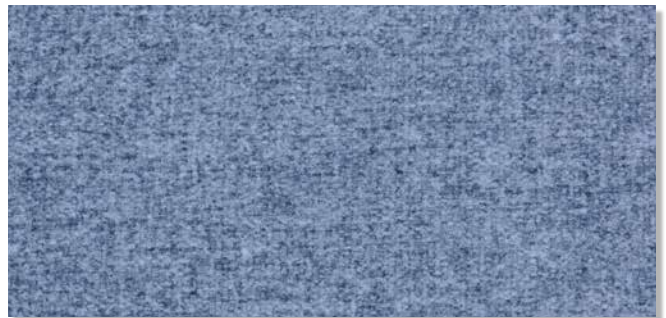
*Venue TRUFFLE*



*Archetype BOURBON*



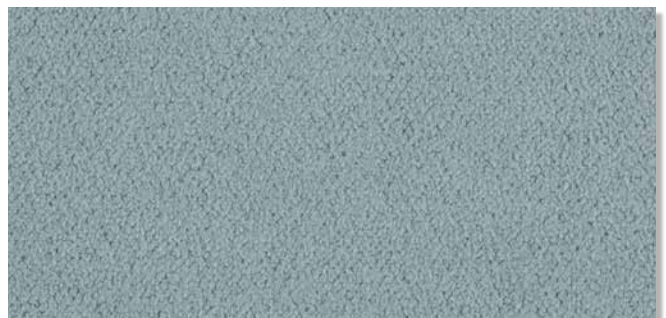
*Archetype ANCHOR*



*Dorset DENIM*



*Dorset ASH*



*High Cotton JADE*

**CLEANABILITY** Water-based cleaners may be used.

# OLD BISCAYNE DESIGNS

## Performance Fabrics



*Dorset* TAUPE



*High Cotton* HAZE



*Venue* CASHMERE



*Archetype* HEMP



*Venue* CERULEAN



*Dorset* SILVER GREY



*Archetype* QUARTZ

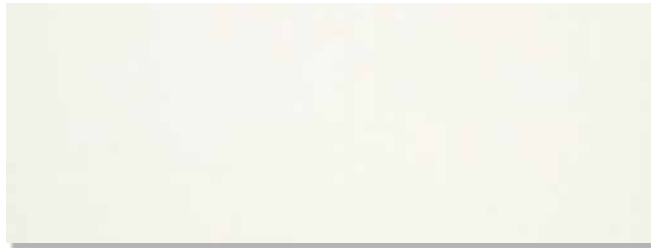


*Archetype* SILT

CLEANABILITY Water-based cleaners may be used.



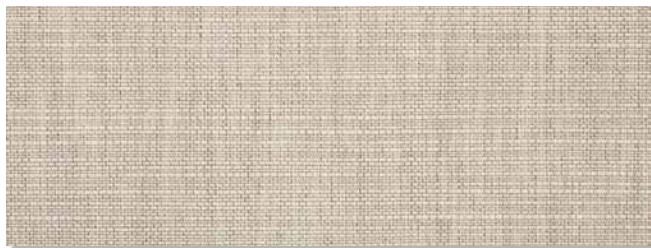
# OLD BISCAYNE DESIGNS



CANVAS WHITE



ACTION LINEN



ECHO ASH



ACTION TAUPE



CAST SLATE



ACTION STONE



HERITAGE GRANITE



CAST SHALE



SPECTRUM DENIM



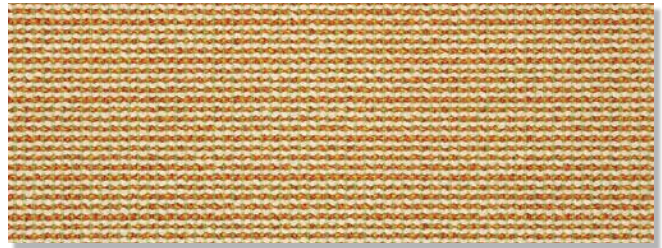
CAST LAGOON

**CLEANABILITY** Water-based cleaners may be used.

# OLD BISCAVNE DESIGNS



ECHO DUNE



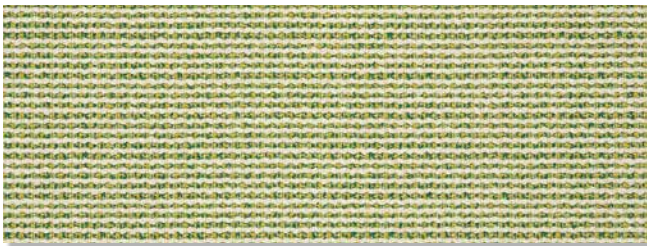
HYBRID CITRUS



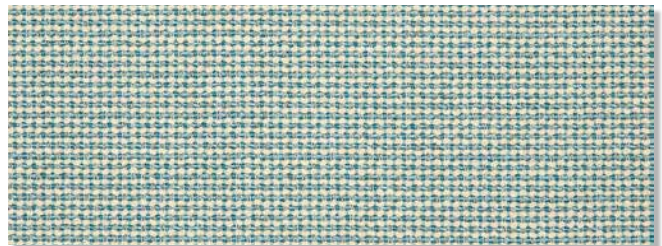
HERITAGE ALPACA



SAILCLOTH SPACE



HYBRID LIME



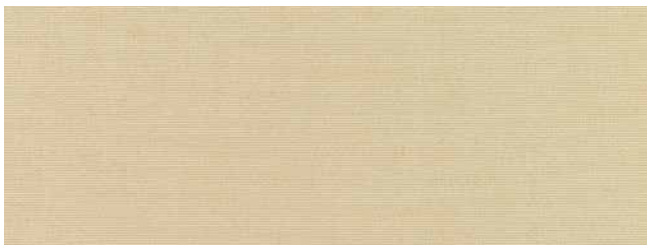
HYBRID SKY



HYBRID SMOKE



CAST ASH



CANVAS ANTIQUE BEIGE



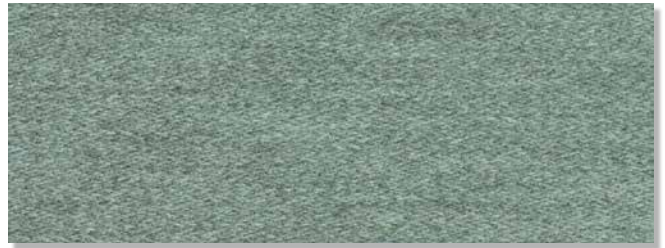
CANVAS GRANITE

CLEANABILITY Water-based cleaners may be used.

# OLD BISCAYNE DESIGNS



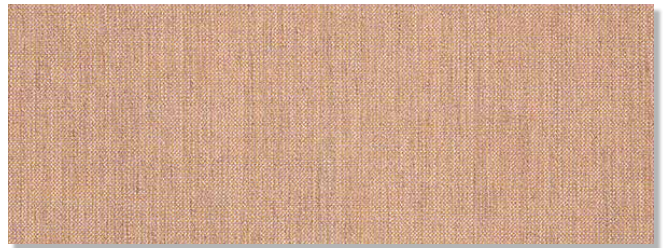
BLEND MIST



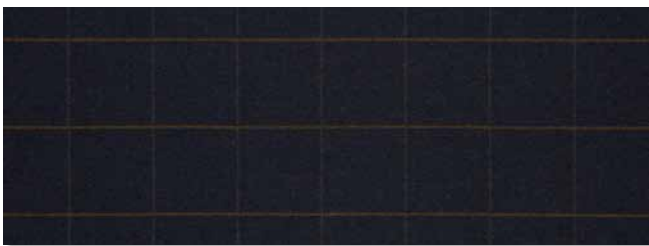
PASHMINA MIST



BOSS TWEEDE II DENIM



CAST PETAL



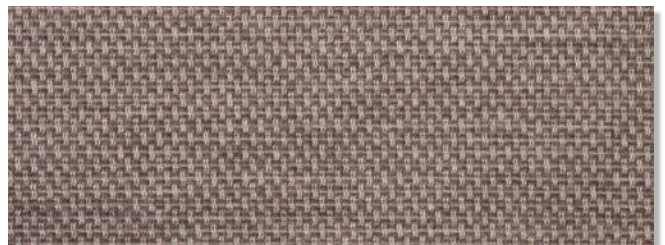
ABBOTT SHADOW



MEANDER LILAC



CAST TEAK



TAILORED WISTERIA



BINGHAM GRAPHITE

CLEANABILITY Water-based cleaners may be used.

## Padded Leathers

### Culp Palance

#### CONTENT

79% Polyester;  
21% Polyurethane

WIDTH 54"

#### ABRASION

15,000 double rubs

#### PASSES

California Tech Bulletin #117 Section E

#### UFAC

NFPA 260

#### CLEANABILITY

Water-based cleaners may be used.

## Recycled Leathers

### embrace™

A Marriage of Nature and Technology

Uses excess leather headed to already overcrowded landfills and recycles it into a stylish and timeless product.

#### FIBER CONTENT

CANTINA face: 100% polyurethane; backing: 43% recycled leather, 40% polyester; 17% cotton

GUNSLINGER face: 88% polyester; 12% polyurethane; backing: 58% recycled leather; 42% polyester

OREGON TRAIL face: 100% polyurethane; backing: 53% polyester; 42% recycled leather; 5% cotton

#### PVC FREE

HIGHLY DURABLE ASTM D 4157 exceeds 100,000 double rubs

FLAMMABILITY UFAC class 1; CAL 117 sec. E pass; NFPA 260 class 1

CLEANABILITY Cleanable with soap and water; do not use alcohol-based cleaning agents.

## Performance Fabrics

### Culp Archetype

CONTENT 79% Polyester, 21% Rayon

FINISH Teflon WIDTH 54"

ABRASION Heavy Duty - Exceeds 70,000 cycles

PASSES California Tech Bulletin #117-2013

UFAC Class 1

NFPA 260 Class 1

CLEANABILITY Water-based cleaners may be used.

### Culp High Cotton TFL

CONTENT 100% Polyester

FINISH Teflon WIDTH 54"

ABRASION Heavy Duty - Exceeds 100,000 cycles

PASSES California Tech Bulletin #117

Section E (CS-191-53) UFAC Class 1

CLEANABILITY Water-based cleaners may be used.

### Culp Dorset

CONTENT 100% Polyester

FINISH i-Clean WIDTH 54"

ABRASION Heavy Duty - Exceeds 55,000 cycles

PASSES California Tech Bulletin #117-2013

UFAC Class 1

NFPA 260 Class 1

CLEANABILITY Water-based cleaners may be used.

### Culp Venue TFL

CONTENT 100% Polyester

FINISH Teflon WIDTH 54"

ABRASION 80,000 cycles

PASSES California Tech Bulletin #117 Section E

UFAC

NFPA 260

CLEANABILITY Water-based cleaners may be used.

### HEAVY-DUTY ANTIMICROBIAL POLYURETHANES

## Easy Maintenance Fabrics

### Culp Dillon

CONTENT 100% Polyurethane      WIDTH 54"  
FINISH Antimicrobial Silver Based Ion Technology  
ABRASION Heavy Duty - Exceeds 200,000 cycles  
PASSES California Tech Bulletin #117-2013;  
UFAC Class 1; NFPA 260 Class 1; MVSS 302 Pass  
CLEANABILITY  
WS - Both water and solvent based solutions.  
Bleach cleanable - 5:1 water/bleach solution.

### Culp Rushmore

CONTENT 100% Polyurethane      WIDTH 54"  
FINISH Antimicrobial; iclean  
ABRASION Heavy Duty - Exceeds 200,000 cycles  
PASSES California Tech Bulletin #117-2013; UFAC Class  
1; NFPA 260 Class 1  
CLEANABILITY  
WS - Both water and solvent based solutions.  
Bleach cleanable - 5:1 water/bleach solution.

### Culp Suave

CONTENT 100% Polyurethane      WIDTH 54"  
FINISH Antimicrobial  
ABRASION Heavy Duty - Exceeds 450,000 cycles  
PASSES California Tech Bulletin #117 Section E  
(CS-191-53); UFAC Class 1; NFPA 260 Class 1;  
MVSS 302 Pass  
CLEANABILITY  
WS - Both water and solvent based solutions.

### Culp Yosemite

CONTENT 100% Polyurethane      WIDTH 54"  
FINISH Antimicrobial  
ABRASION Heavy Duty - Exceeds 100,000 cycles  
PASSES California Tech Bulletin #117-2013;  
UFAC Class 1; NFPA 260 Class 1; MVSS 302 Pass  
CLEANABILITY  
WS - Both water and solvent based solutions.  
Bleach cleanable - 5:1 water/bleach solution.

# OLD BISCAYNE DESIGNS

---



<b>Abbott</b>	100% Sunbrella Acrylic Selvage: Top / Bottom	<b>Meander</b>	100% Sunbrella Acrylic Selvage: Left / Right
<b>Blend</b>	97% Sunbrella Acrylic, 3% Other Fiber Selvage: Left / Right	<b>Spectrum</b>	100% Sunbrella Acrylic Selvage: Left / Right
<b>Bingham</b>	99% Sunbrella Acrylic, 1% Other Fiber Selvage: Top / Bottom	<b>Space</b>	100% Sunbrella Acrylic Selvage: Left / Right
<b>Boss</b>	100% Sunbrella Acrylic Selvage: Top / Bottom	<b>Tailored</b>	100% Sunbrella Acrylic Selvage: Top / Bottom
<b>Canvas</b>	100% Sunbrella Acrylic, Selvage: Left / Right	<b>Heritage</b>	50% Sunbrella Acrylic, 50% Recycled Sunbrella Acrylic Selvage: Left / Right
<b>Cast</b>	100% Sunbrella Acrylic Selvage: Left / Right	<b>Hybrid</b>	98.6% Sunbrella Acrylic, 1.4% Polyester Selvage: Left / Right
<b>Action</b>	100% Sunbrella Acrylic Selvage: Left / Right	<b>Pashmina</b>	98% Sunbrella Acrylic, 2% Other Fiber Selvage: Left / Right
<b>Echo</b>	100% Sunbrella Acrylic Selvage: Left / Right		

WIDTH 54" / 137 cm width

#### CLEANABILITY

Water-based cleaners may be used.

#### SURFACE TREATMENT

Sunbrella fabrics are treated with a proprietary water and stain repellent finish that is designed to last for several years, but may require replenishing after a thorough cleaning. Glen Raven® recommends 303® Fabric Guard™, available in the United States, and Tex'Aktiv, available internationally.

#### DISCLAIMER

Some Old Biscayne product(s) may be manufactured using Sunbrella fabrics. Old Biscayne's designs are not licensed by Sunbrella or Glen Raven, Inc.

#### COPYRIGHT

Sunbrella® image(s) provided by Glen Raven, Inc., Owner of the Sunbrella registered trademark.



# OB

---

Biscayne Designs

1.800.397.5397

123 INDUSTRIAL BOULEVARD · AMERICUS, GEORGIA 31719

| [WWW.OLDBISCAYNEDESIGNS.COM](http://WWW.OLDBISCAYNEDESIGNS.COM) |