



Navarre Knob

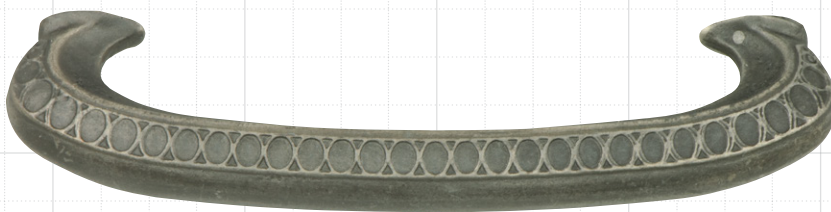
ANTIQUe BRASS, ANTIQUe PEWTER, & SATIN NICKEL

OD: 1 1/4" P: 1" BD: 1/2"

Navarre Ring

ANTIQUe BRASS, ANTIQUe PEWTER, &
SATIN NICKEL

OL: 2" OW: 1 7/8" P: 3/4" BD: 1 7/8"



Navarre Pull


ANTIQUe BRASS, ANTIQUe PEWTER,
& SATIN NICKEL

OL: 4 3/8" OW: 1/2" P: 1 1/8"

BL: 1/2" BW: 3/8" CC: 3 3/4"



OL Overall Length
OW Overall Width
OD Overall Diameter
P Projection
BL Base Length
BW Base Width
BD Base Diameter
CC Center to Center

 = 1/4 Inch