

# OLD BISCAYNE DESIGNS

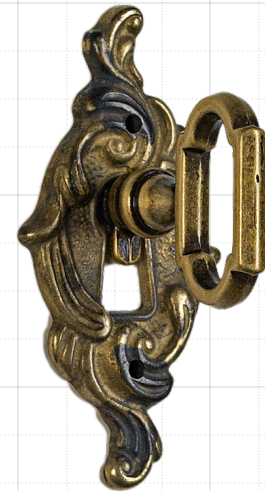
## Hardware



Vanessa Drop Pull

ANTIQUÉ SILVER & ANTIQUÉ BRONZE

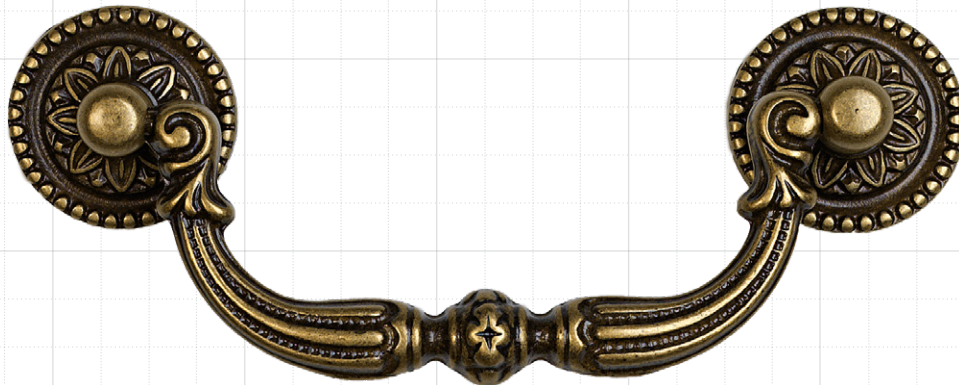
OL: 2 1/4" OW: 1 1/4" P: 3/4" BD: 7/8"



Vanessa False Key

ANTIQUÉ BRONZE

OL: 2 1/2" OW: 1 1/4" P: 1 1/4"




Vanessa Large Pull ANTIQUÉ BRONZE

OL: 5" OW: 2" P: 3/4" BD: 1 1/8" CC: 3 3/4"



Vanessa Small Pull ANTIQUÉ BRONZE

OL: 3 1/2" OW: 1 1/4" P: 3/4" BD: 1" CC: 2 3/4"

 = 1/4 Inch

OL Overall Length  
OW Overall Width  
P Projection  
BD Base Diameter  
CC Center to Center